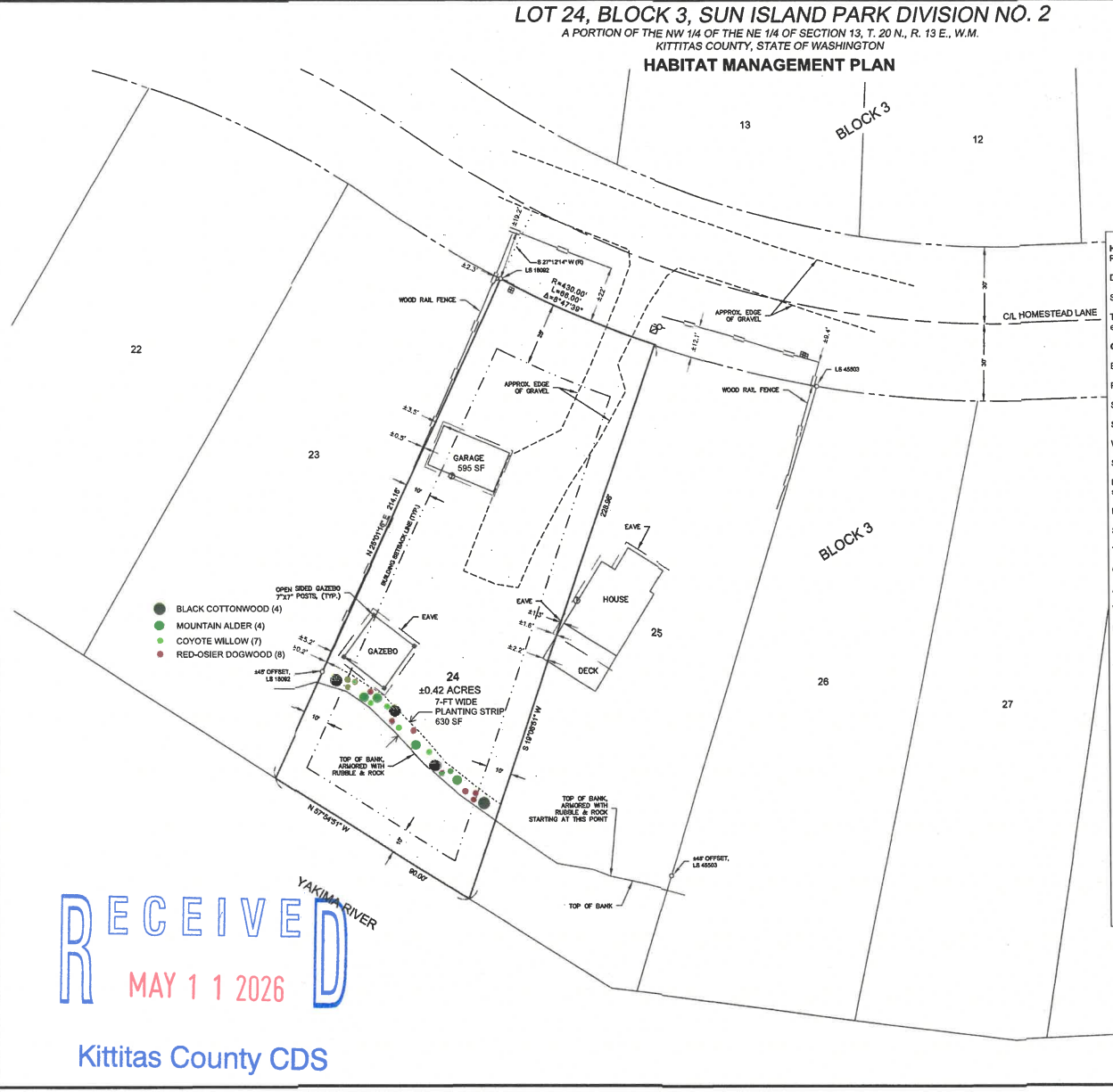
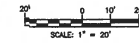


**LOT 24, BLOCK 3, SUN ISLAND PARK DIVISION NO. 2**

A PORTION OF THE NW 1/4 OF THE NE 1/4 OF SECTION 13, T. 20 N., R. 13 E., W.M.  
KITITAS COUNTY, STATE OF WASHINGTON

**HABITAT MANAGEMENT PLAN**



- BLACK COTTONWOOD (4)
- MOUNTAIN ALDER (4)
- COYOTE WILLOW (7)
- RED-OSIER DOGWOOD (8)

**Habitat Management Plan**  
Project Area  
Dimensions: 90 feet long x 7 feet wide (630 sq. ft.)  
Setting: Riparian buffer / floodplain planting strip  
Target Species: Black cottonwood (*Populus trichocarpa*), mountain alder (*Alnus incana*), coyote willow (*Salix exigua*), red-osier dogwood (*Cornus sericea*)

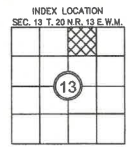
**Goals**  
Establish a native woody riparian community to stabilize soils, reduce erosion, and improve habitat.  
Promote plant survival and growth to provide shade, bank stability, and wildlife cover.  
Suppress invasive species and competing weeds during establishment.

**Site Preparation**  
Weed control: Remove sod/blackberry/grass prior to planting (scalp or spot-spray).  
Soil prep: Light scarification or augered holes, with organic mulch ring (3-4") after planting.  
Moisture: Ensure soil is moist at planting; if not near a perennial water source, supplemental watering during first 2 summers is required.

**Planting Design**  
See conceptual planting plan  
Total Planting Area (approximate for 630 sq. ft.):  
Cottonwood: 3-4  
Alder: 4-5  
Willow: 6-8  
Dogwood: 7-9

**Maintenance**  
Watering: Bi-weekly (May-September) during first 2 summers, if natural hydrology is insufficient.  
Weed control: Hand-weed, mulch replenishment annually.  
Protection: Install browse guards or Vexar tubes on cottonwood/alder against deer/rodents.

**Monitoring & Survival Demonstration Narrative**  
Monitoring Approach  
Schedule:  
Year 1: Quarterly inspections (spring, summer, fall, winter).  
Years 2-3: Biannual inspections (spring/fall).  
Years 4-5: Annual inspections (spring).  
Performance Standards:  
Year 1 survival: ≥60% of installed plants alive.  
Year 3 survival: ≥70% survival, with evidence of growth (height increase, stem caliper expansion).



**RECEIVED**  
MAY 11 2026

Kittitas County CDS

REVISIONS	BY	DATE

**STEVEN ROE**  
**HABITAT MANAGEMENT PLAN**

**Encompass**  
ENGINEERING & SURVEYING  
Western Washington Division  
145 NE Upper Street, Suite 200, Everett, WA 98203 • Phone: (425) 392-0200  
1115 South Chastain Ave., Suite 210 • CE, EA, W, R, BS, SS • Phone: (809) 474-7433

JOB NO.	201751
DATE	03/2025
SCALE	1"=20'
DESIGNED	N/A
DRAWN	MRK
CHECKED	
APPROVED	

SHEET 1 of 1